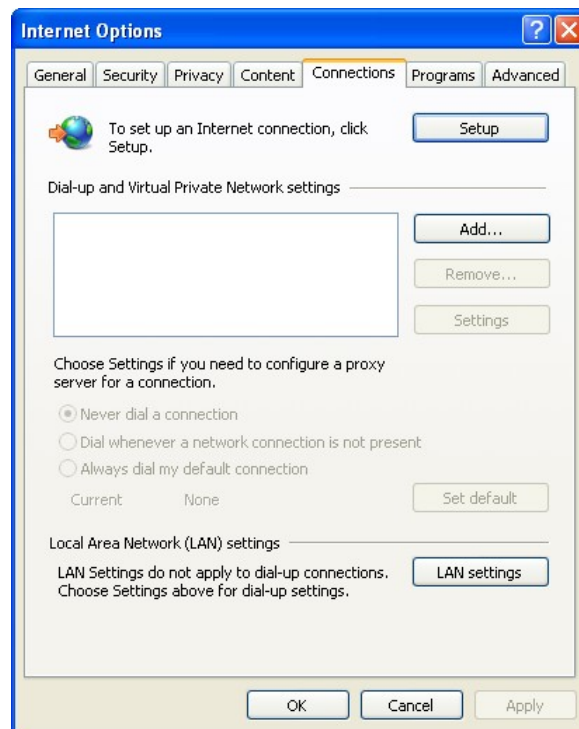
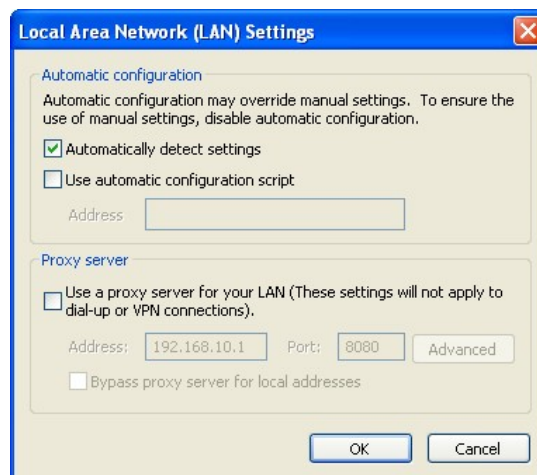


In order to check if you are accessing the Internet through a proxy server that may be blocking the video stream, open Internet Explorer and select Tools > Internet Options from the top menu.

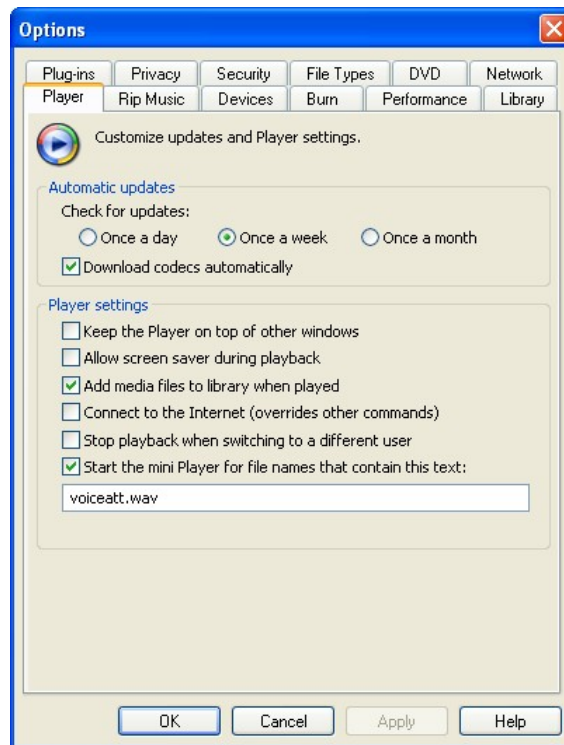


Click on the connections tab and then on the LAN settings button at the bottom of the window.

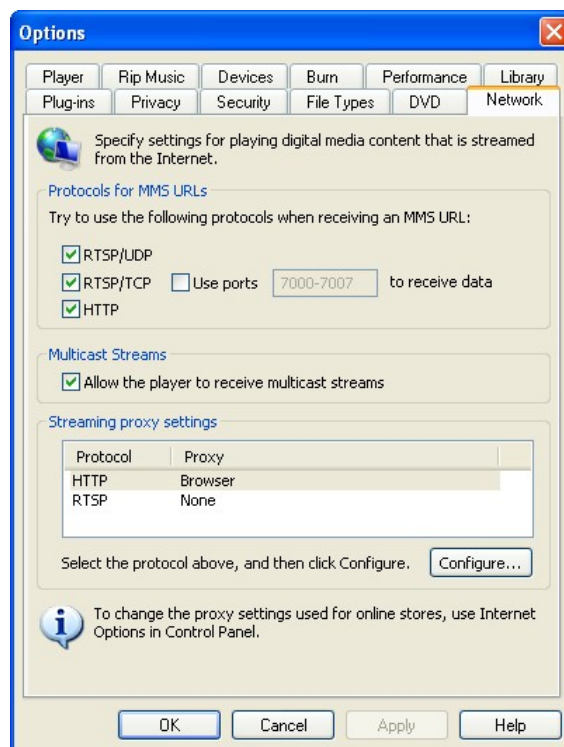


If you are using a proxy server the lower half of the window will have a tick and there will be an IP address and possibly a Port number. Video from our server streams across Port 8080 so you may have to place this in the Port box.

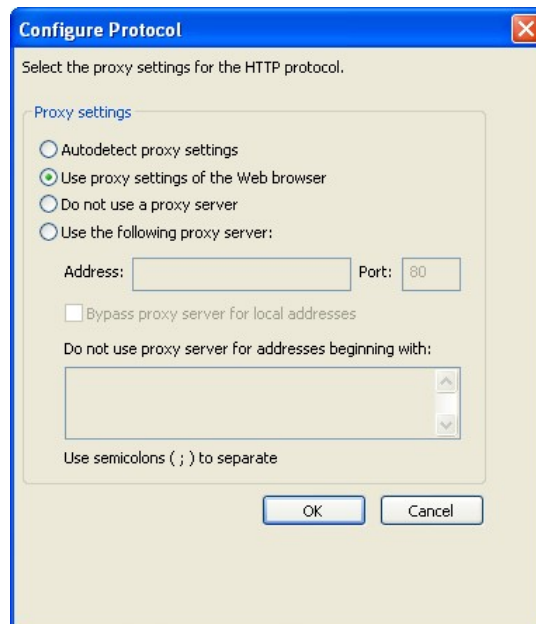
If you are unable to change these settings try opening Windows Media Player and from the top menu go to Tools > Options.



Click on the Network tab.



Click the Configure button.



In this window the normal setting is 'Use proxy settings of Web browser' but if you were unable to change the port number in your browser, select 'Use the following server:'. Now enter the proxy server address and then 8080 in the Port box and click OK. Close Media Player and try watching the broadcasts again.

If this still doesn't work I am afraid the only person that can help you is your IT technician who would have to open port 8080 for you on the server.